



GRIP MECHATRONICS PVT LTD

www.gripmech.com



Office Address

412, Medankarwadi,
Tal Khed, Dist Pune,
Maharashtra, 410501

Manufacturing Unit Address

PLOT / PAP / J-40, Industrial
Area, MIDC Bhosari,
Pune -411026 India.

Email

info@gripmech.com /
gripmechatronics@gmail.com /
marketing@gripmech.com

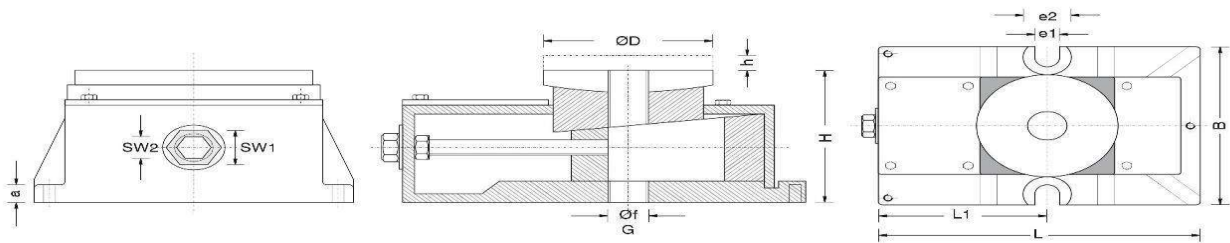
(+91) 020-27120099 / 9960426926 / 9767544467 / 9766412467 / 8380931777

- **PRECISION MACHINING LEVELER: SERIES GMPL-ML**

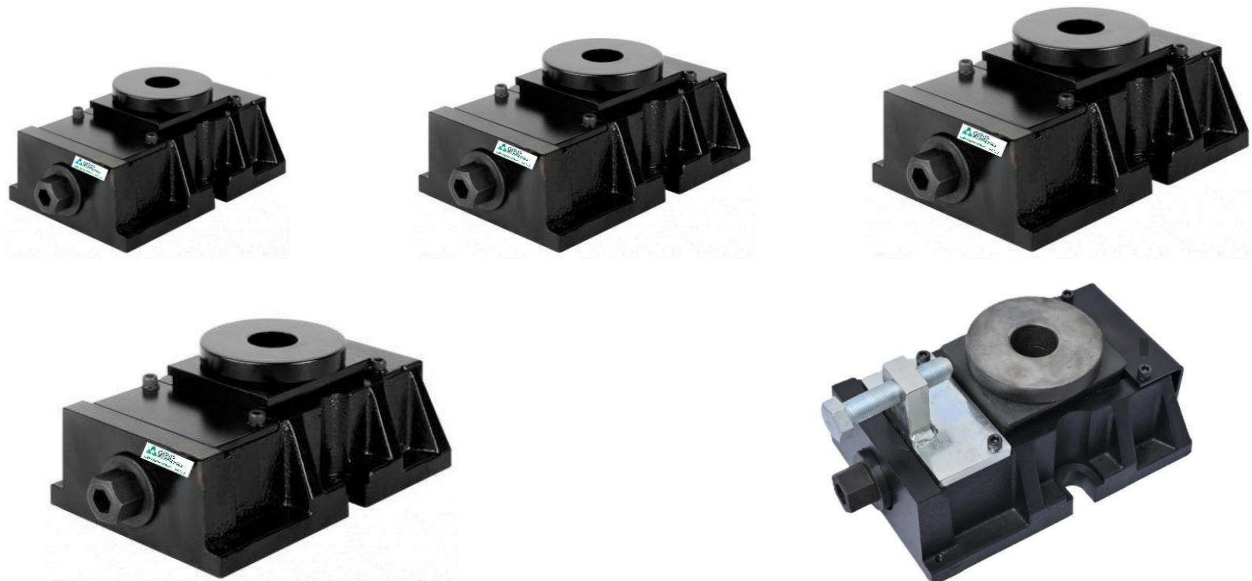


Our levellers allow you to:

- precisely level and align machinery;
- over time, avoiding potential yielding of the worktop, ensuring maximum rigidity;
- possibility of programming the re-leveling of the machine, without long and uneconomical machine and production stops;
- have a complete integration between machinery and foundations;
- reduce the high tensions and distortions of the base due to the stresses of the machinery during the processing phase;

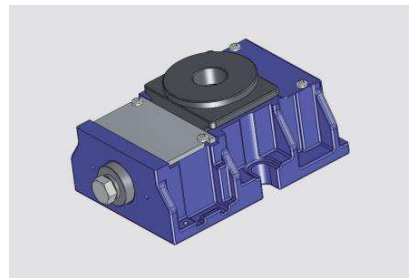


The choice of the Grip leveler must be made considering that the nominal load is greater than or equal to the maximum load of the machinery, the maximum allowable load is used to verify that the jack is not accidentally damaged during the leveling operations of the pallet during the installation of the machine.



Model	GMPL-ML-0	GMPL-ML-1	GMPL-ML-2	GMPL-ML-3	GMPL-ML-4
Recommended Load (Kg/pc)	1000	2000	4000	5500	12000
Max. Load (Kg/pc)	9000	12000	24000	36000	70000
L(mm)	170	180	220	270	350
L1(mm)	92	95	122	145	181
B (mm)	108	120	145	180	230
H (mm)	60	75	95	110	138
D (mm)	75	75	92	113	145
h (mm)	5	5	6	7	10
F (mm)	17	24	28	37	37
G	M12	M20	M24	M30	M36
SW1	19	22	27	27	32
e1	12.7	14	18	22	28
e2	26	26	32	39	46

Note: Please select dimensions 'G' or 'f' at the time of order.



- **Vibration Isolation & Shock Dampening:** Grip levelers are designed to reduce harmful vibrations and shocks during machine operations.
- **Stable Machine Leveling:** Grip levelers provide stable leveling using screw or base support systems.
- **Precise Adjustment:** We offer precise height and angle adjustments to align machines perfectly to the foundation.
- **Heavy-Duty Industrial Use:** Suitable for heavy machines in factories, workshops, and production lines.
- **Heavy Machinery Applications:** Grip levelers are engineered to handle significant loads and are used with industrial equipment like machine tools, presses, compressors, generators, and other heavy machines — helping to align, anchor, and re-level them over time.

- GMPL CUSHY FOOT MOUNT, SERIES GMPL-CFM

GMPL-CFM series cushy foot mounts employ the well proven inclined rubber element design to achieve much higher deflections compared to simple rubber in compression devices and therefore superior isolation of low frequency vibration.

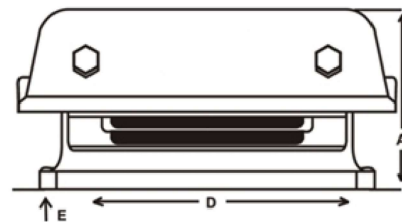
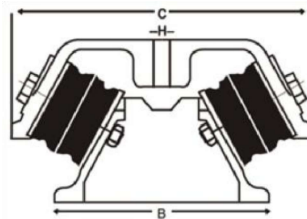
These mounts consists of two rubber sandwich pieces housed in specially designed robust iron casting. The mountings are protected against oil, physical & mechanical damages. GMPL-CFM Cushy Foot Mounts give insulation against transverse, vertical and longitudinal stiffness, vibration & reduces transmission of vibrations, structure borne noise & shock from a wide range of rotating and reciprocating machineries. These mounts have very low natural frequencies and possess good lateral stability.

Application

- Diesel Generating Sets
- Engine Test Beds
- Lift Motor Gear
- Chillers and Cooling Towers
- Large Fans and AHU's
- Pumps and Compressors
- Vibrating Screens and Hoppers

Advantages

- Rubber to metal bonded rectangular elements inclined to achieve maximum load and deflection using a combination of compression and shear loading.
- High strength cast iron castings.
- Rubber sandwich elements are effectively protected by the top casting and its extended skirt.
- Two different horizontal stiffness axis enable optimum system characteristics & vibration isolation to be achieved using careful orientation of the mounting.



Product Code	Max Load/Mount KG	Dimensions (mm)					
		A	B	C	D	E	H
GMPL-C-ML-0	100	75	82	132	90	12.5	M12
GMPL-C-ML-1	160	75	82	132	90	12.5	M12
GMPL-C-ML-2	250	75	82	132	90	12.5	M12
GMPL-C-ML-3	400	105	145	205	160	18	M16

• PRECISION MACHINING LEVELER: SERIES GMPL-MM

GMPL machine leveller, series MM is a one stop solution for precise yet cost efficient installation of heavy machinery and equipment. A key design element is the central slot, which allows for installation after grouting bolts are secured to the foundation. Large supporting surface and high levelling adjustment is available.

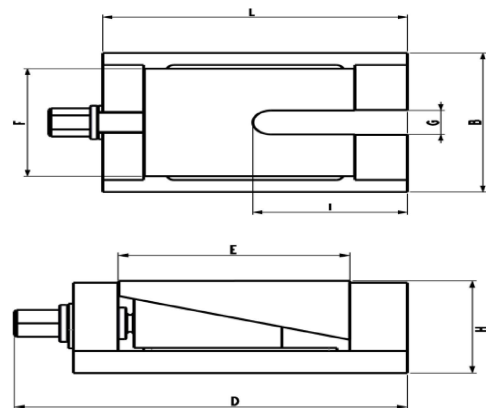
As there is equal load distribution through two lifting wedges, the force required to raise or lower a machine is reduced considerably, resulting in effortless and precision levelling.

Application

- Heavy machine tools for processing crankshafts and camshafts or rollers
- Boring machines, gear testing machines, horizontal and critical machining centres
- Surface grinding and laser cutting machines
- Die-casting and plastic injection moulding machines
- Punching and press machines
- Turbine and compressors
- Printing machines

Advantages

- Offers high accuracy.
- Reduces installation work cost.
- Can be fixed using an anchor bolt.
- Offers the best rigidity.
- Easy installation.
- Most suitable for installing machines such as milling machines, radial drilling machines, planers and surface plates



Description	UOM	Product Code
		GMPL-MM
Max load per mount	kg	8000
Dimensions Data		
Stud Size (M)	mm	M20 x 15
Length x Width x Hight (LxBxH)	mm	209 x 145 x 86
Adjustment stroke	mm	11
Resting Dimension (ExF)	mm	145 x 112
Slot diameter(G)	mm	25
Slot Length(I)	mm	106
Overall Length	33	246

**FOR MORE INFORMATION
PLEASE VISIT US AT WWW.GRIPMECH.COM**

(+91) 9960426926 / 9767664467 / 9766412467 / 8380931777

Office Address

412, Medankarwadi,
Tal Khed, Dist Pune,
Maharashtra, 410501

Manufacturing Unit Address

PLOT / PAP / J-40, Industrial
Area, MIDC Bhosari,
Pune -411026 India.

Email

info@gripmech.com /
gripmechatronics@gmail.com /
marketing@gripmech.com