



# GRIP MECHATRONICS PVT.LTD.

AT POST MEDANKARWADI, 412 ,

TAL: KHED, DIST : PUNE-410501  
MAHARASTRA INDIA .

0091 8380931777 | 9767544467

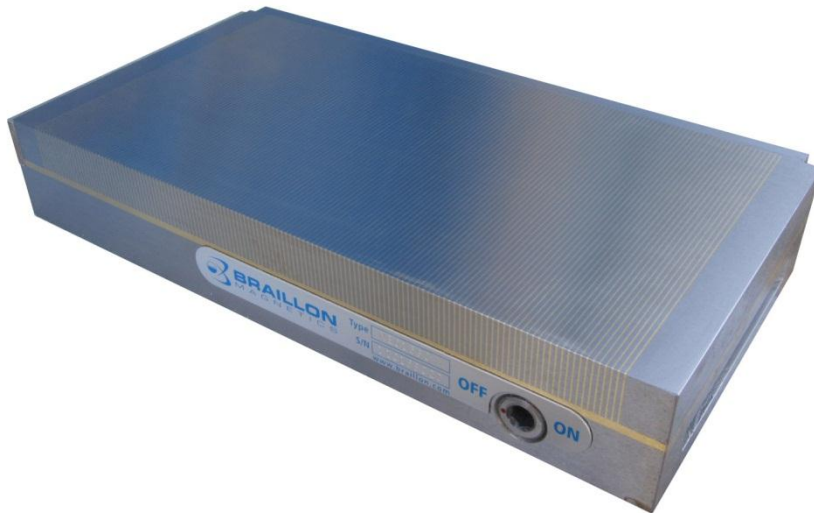
0091 8380921777/8380931777

E-mail [.marketing@gripmech.com](mailto:.marketing@gripmech.com)

Website- [www.gripmech.com](http://www.gripmech.com)

GMPL -BARILLON MAGNETICS PRODUCTS

## Work holding



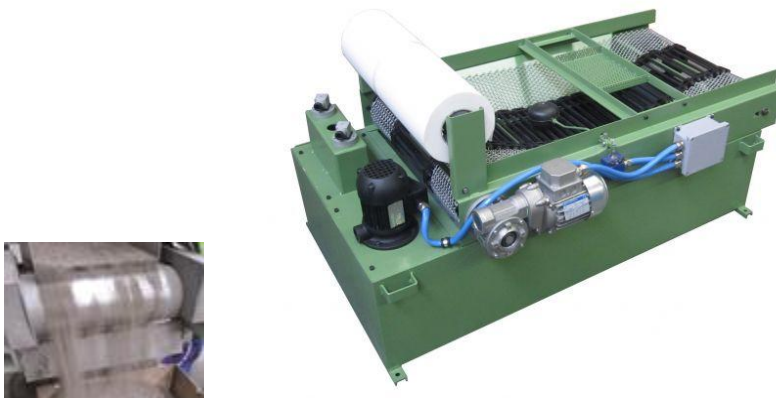
- Magnetic Chucks for Milling Grinding and Turning
- Sine Tables and magnetic squares
- Machine Tool Palletizing
- Precision Tools
- Vacuum Chucks

## **Magnetic Lifting and Material Handling**



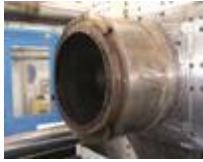
- Permanent Lifting Magnets
- Battery Powered Magnets
- Heavy duty magnetic material handling
- Magnetic accessories for automation and gripping

## **Magnetic Separation**



- Magnetic Grids
- Magnetic Plates
- Magnetic Drums and Pulleys
- Overband
- Cleaning tools

## Quick Mold Change Systems



- Magnetic Platens for Plastic Injection Systems
- Magnetic Platens for presses and compression
- Rubber and Composite - 250° c
- Custom Machines - Magnetic Systems

## Parts Demagnetization



- Hand Held Systems
- Demagnetization Tables
- Demagnetization Tunnel
- Specialty Tools : Conveyors and Roller Tables
- Gauss Measuring Devices

## Magnets and Permanent Systems



- Permanent Magnets
- Magnetic Cupping
- Magnetic Bar and Rulers
- Magnetic Hooks
- Magnetic Rubber

## Paper for paper filter



- - **Long service life**
  - **Innovative**
  - **Effective**

To use with filter paper

- . 3 filtration level : 35  $\mu\text{m}$  / 25  $\mu\text{m}$  / 12–15  $\mu\text{m}$
- . delivered in rolls of 100 meters
- . material : viscose
- . filtration of emulsion, water, oil ...
- . important high flow

- Use :
  - Separation
  - Filtration

Options:

All widths can go from 500 to 2300 m

	<b>Qty</b>	<b>Product</b>	<b>Weight in kg</b>	<b>A</b>	<b>B</b>
<input type="checkbox"/>	<input type="text"/>	60.50.1000.035 -		L=1000	35 microns
<input type="checkbox"/>	<input type="text"/>	60.50.700.035 -		L= 700	35 microns
<input type="checkbox"/>	<input type="text"/>	60.50.500.035 -		L= 500	35 microns
<input type="checkbox"/>	<input type="text"/>	60.50.1000.050 -		L=1000	25 microns
<input type="checkbox"/>	<input type="text"/>	60.50.700.050 -		L=700	25 microns
<input type="checkbox"/>	<input type="text"/>	60.50.500.050 -		L=500	25 microns
<input type="checkbox"/>	<input type="text"/>	60.50.1000.070 -		L=1000	12/15 microns
<input type="checkbox"/>	<input type="text"/>	60.50.700.070 -		L=700	12/15 microns
<input type="checkbox"/>	<input type="text"/>	60.50.500.070 -		L=500	12/15 m

---

Works - |Pune- Nashik Highway Nanekarwadi Chakan PUNE Maharashtra -  
410501|INDIA | Tel.+(91) 8380931777 / 8380941777 / 9975669129 /  
9766412467 Website: <http://www.gripmech.com>, E-Mail:[gripmechatronics@gmail.com](mailto:gripmechatronics@gmail.com),  
[Marketing@gripmech.com](mailto:Marketing@gripmech.com)